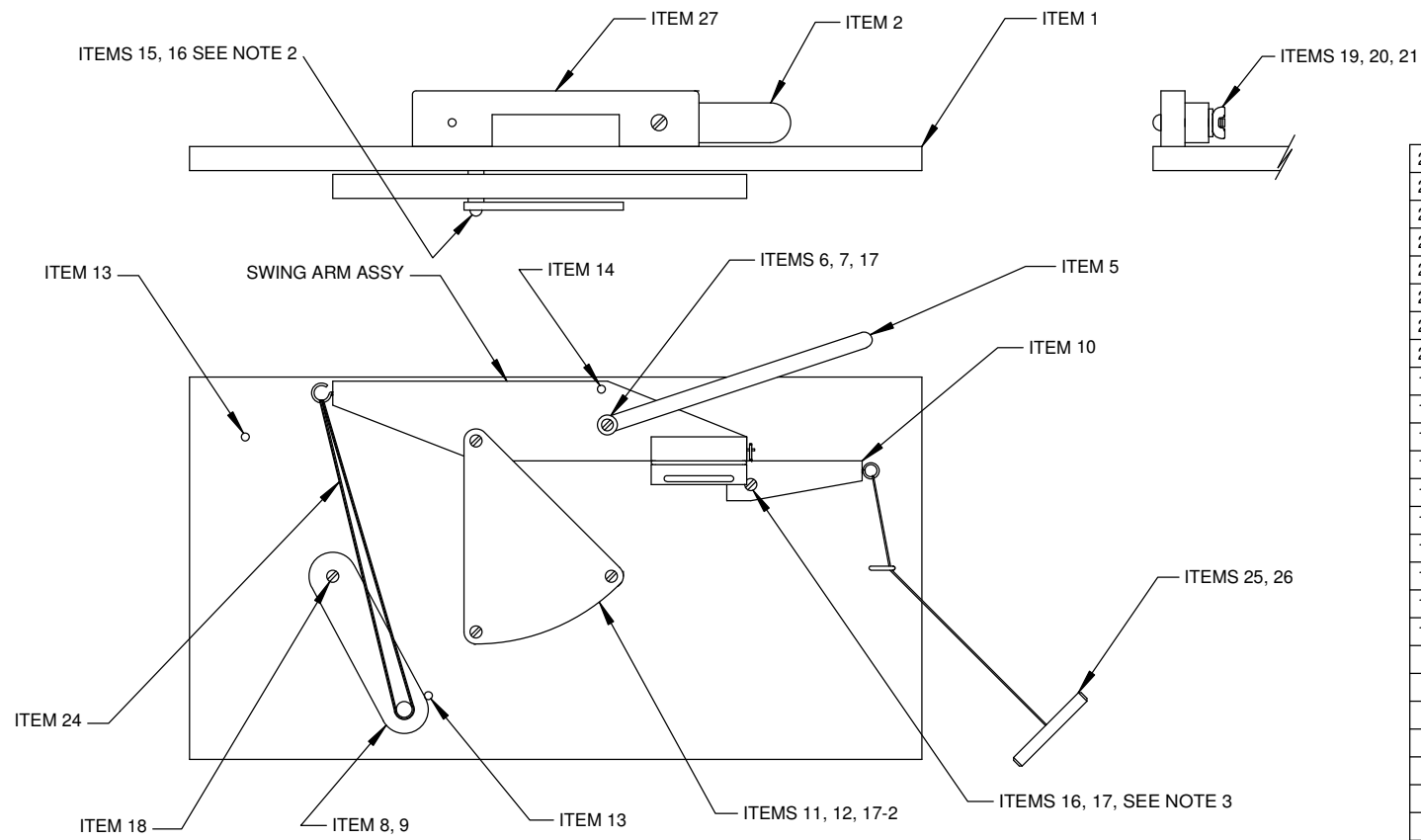


- NOTES:
 1. GLUE ALL DOWELS IN PLACE AS SHOWN
 2. PLACE 2 ITEMS 16 BETWEEN ITEMS 1 AND SWING ARM ASSY.
 3. PLACE 1 ITEM 16 BETWEEN ITEM 1 AND ITEM 10.
 4. ITEM 8 IS SHOWN IN LOAD POSITION.

REVISIONS				
ZONE	REV	DESCRIPTION	DATE	APPROVED

D
C
B
A

D
C
B
A



ITEM	QTY	PART NO. OR MATERIAL	NAME
27	1	3/4 PLY	HANDLE
26	AR	STRING	LANYARD STRING
25	1	3/8 DOWEL	LANYARD HANDLE
24	AR	#33	RUBBER BAND
23	3	#13/16 MED	SCREW EYE
22	1	#1/8 MED	SCREW EYE
21	1	1/4-20	WING NUT
20	1	1/4 FLAT	WASHER
19	1	1/2-20 X 2	CARRIAGE BOLT
18	1	#8 X 1 FH	SCREW
17	4	#8 X 1 1/2 FH	SCREW
16	4	#8 FLAT	WASHER
15	1	#8 X 1 1/2	SCREW
14	1	1/4 X 1 DOWEL	ARM STOP DOWEL
13	2	1/4 X 1 1/8	STOP DOWEL
12	2	1/2 DOWEL	GUARD SPACER
11	1	1/4 PLY	FINGER GUARD
10	1	3/4 PINE	TRIGGER
9	1	1/2 DOWEL	ARM HANDLE
8	1	3/8 PLY	TENSION ARM
7	1	1/32 X 5/8	RUBBER WASHER
6	1	1/2 DOWEL	FRICTION ARM DWL
5	1	1/4 PLY	FRICTION ARM
4	1	SEE DETAIL	FRICTION CLAMP
3	1	3/4 PLY	SWING ARM
2	1	3/4 PLY OR PINE	ELEVATION LEG
1	1	3/4 PLY	BASE

BILL OF MATERIAL

This information is circulated as a service to interested persons: no liability is accepted by RCRV in relation to its safety or applicability in individual cases or in relation to its installation or adaption for which appropriate medical, engineering or other professional services ought to be obtained. Permission is hereby given to reproduce this information sheet, drawing or notes. Please give RCRV and the sponsoring organization credit for any information drawings or notes that are disseminated. RCRV is a voluntary organization which provides assistance to disabled people utilizing the capabilities of retired technical volunteers, professional engineers, technicians and tradesmen.

Rockwell-Collins Retiree Volunteers

FRISBIE THROWER NO.2

DESIGNER	DATE	SCALE	DWGNO	REV
		D	00039	
		SCALE 1/2		SHEET 4 OF 5

8 7 6 5 4 3 2 1

8 7 6 5 4 3 2 1

8 7 6 5 4 3 2 1

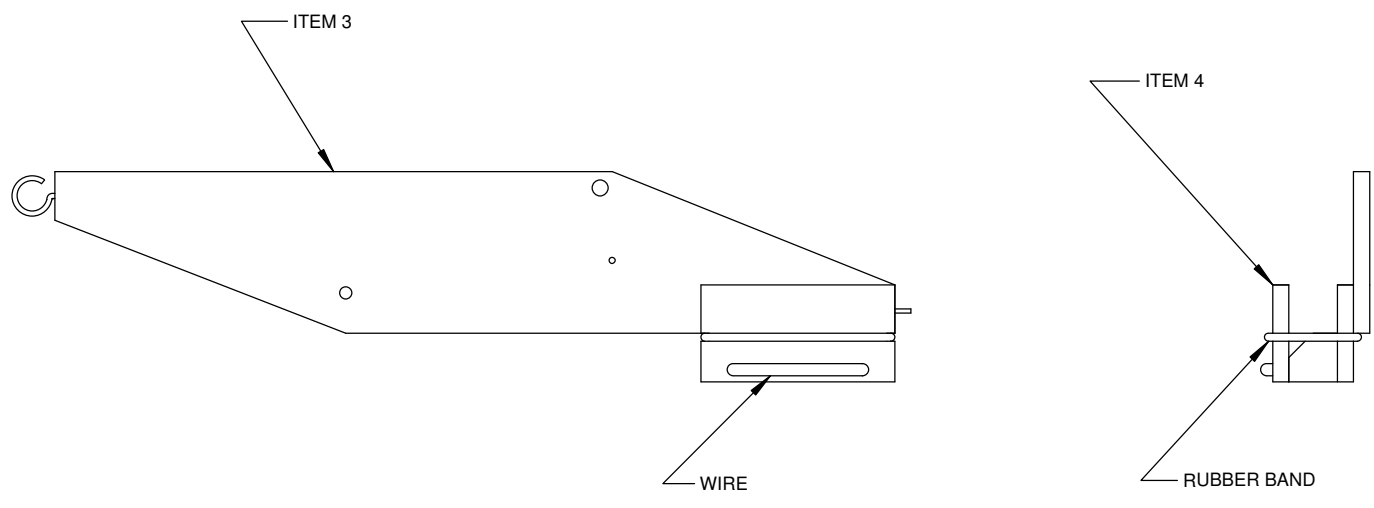
ZONE		REV	DESCRIPTION	DATE	APPROVED

D

C

B

A



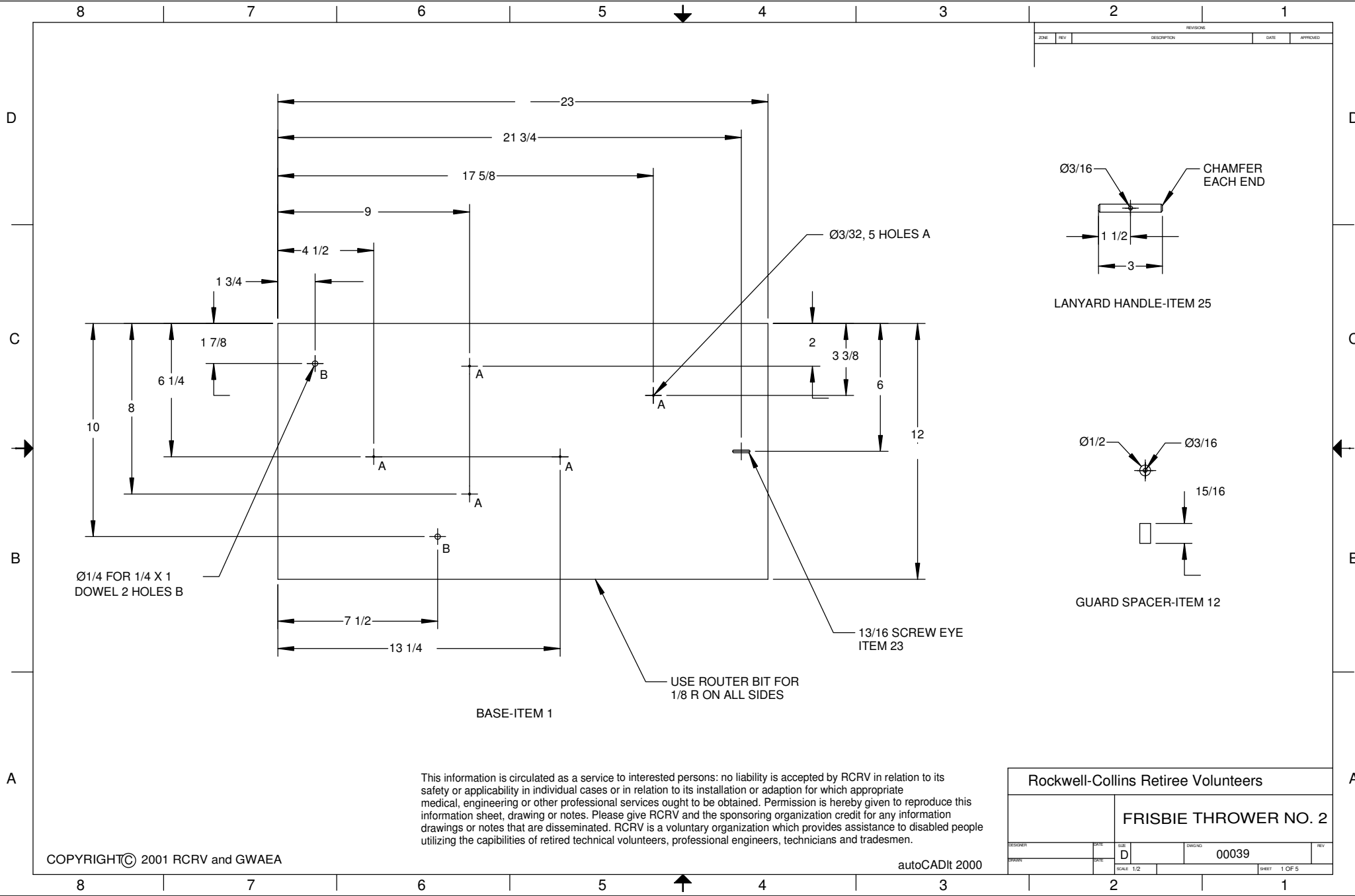
SWING ARM SUB ASSEMBLY

- ASSEMBLY NOTES:**
1. GLUE AND NAIL FRICTION CLAMP BOTTOM TO SWING ARM WHERE SHOWN.
 2. INSTALL WIRE CLIP THRU HOLES SECURING TOP LOOSELY SO TOP CAN HINGE. TRIM EXCESS WIRE FLUSH WITH BOTTOM.
 3. INSTALL RUBBER BAND IN NOTCHES TO CREATE FRISBIE CLAMP.

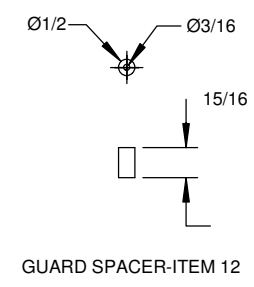
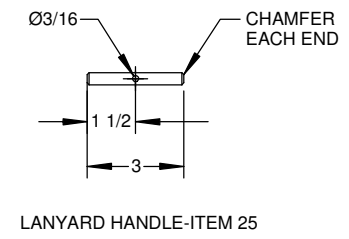
This information is circulated as a service to interested persons: no liability is accepted by RCRV in relation to its safety or applicability in individual cases or in relation to its installation or adaption for which appropriate medical, engineering or other professional services ought to be obtained. Permission is hereby given to reproduce this information sheet, drawing or notes. Please give RCRV and the sponsoring organization credit for any information drawings or notes that are disseminated. RCRV is a voluntary organization which provides assistance to disabled people utilizing the capabilities of retired technical volunteers, professional engineers, technicians and tradesmen.

Rockwell-Collins Retiree Volunteers					
FRISBIE THROWER NO. 2					
DESIGNER	DATE	SIZE	DWG/NO.	REV	
		D	00039		
		SCALE: 1/1	SHEET 5 OF 5		

8 7 6 5 4 3 2 1



REVISIONS				
ZONE	REV	DESCRIPTION	DATE	APPROVED

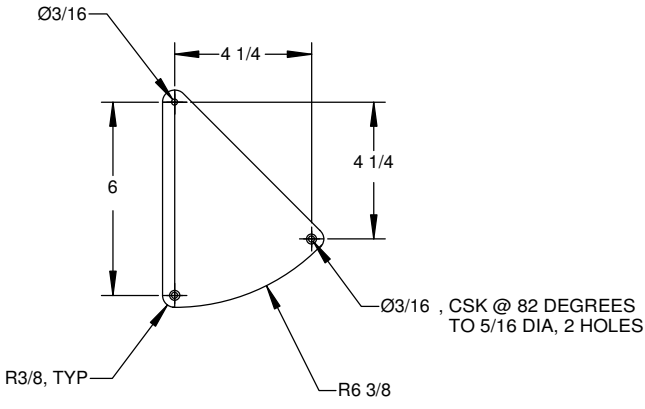


This information is circulated as a service to interested persons: no liability is accepted by RCRV in relation to its safety or applicability in individual cases or in relation to its installation or adaption for which appropriate medical, engineering or other professional services ought to be obtained. Permission is hereby given to reproduce this information sheet, drawing or notes. Please give RCRV and the sponsoring organization credit for any information drawings or notes that are disseminated. RCRV is a voluntary organization which provides assistance to disabled people utilizing the capabilities of retired technical volunteers, professional engineers, technicians and tradesmen.

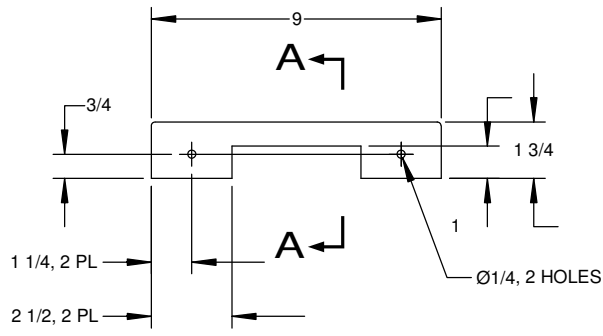
Rockwell-Collins Retiree Volunteers				
FRISBIE THROWER NO. 2				
DESIGNER	DATE	SSL	DWGNO	REV
		D	00039	
DRAWN	DATE	SCALE	SHEET	
		1/2	1 OF 5	

REVISIONS				
ZONE	REV	DESCRIPTION	DATE	APPROVED

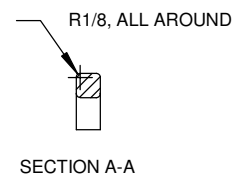
D



FINGER GUARD-ITEM 11

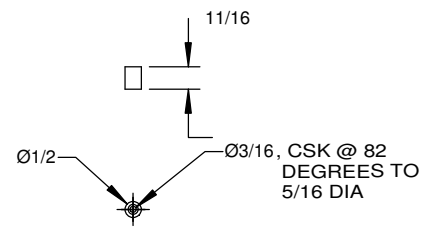


HANDLE-ITEM 27



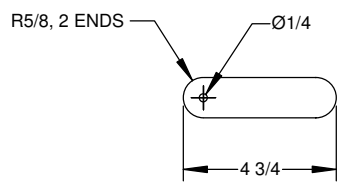
SECTION A-A

C

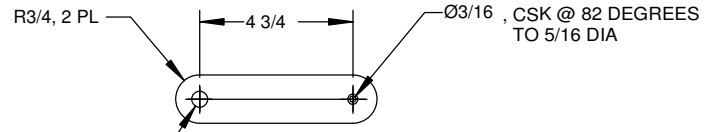


FRICITION ARM DOWEL-ITEM 6

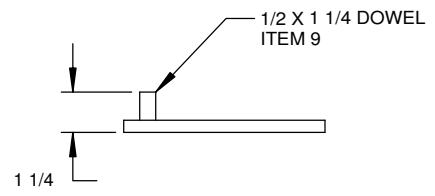
B



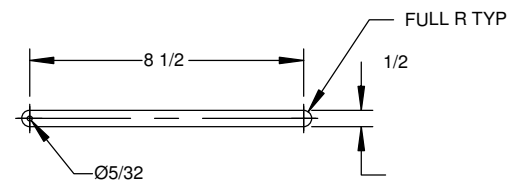
ELEVATION LEG-ITEM 2



TENSION ARM-ITEM 8



1 1/4



FRICITION ARM-ITEM 5

A



FRICITION ARM WASHER-ITEM 7

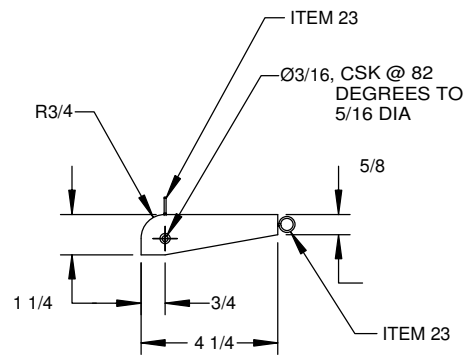
This information is circulated as a service to interested persons: no liability is accepted by RCRV in relation to its safety or applicability in individual cases or in relation to its installation or adaption for which appropriate medical, engineering or other professional services ought to be obtained. Permission is hereby given to reproduce this information sheet, drawing or notes. Please give RCRV and the sponsoring organization credit for any information drawings or notes that are disseminated. RCRV is a voluntary organization which provides assistance to disabled people utilizing the capabilities of retired technical volunteers, professional engineers, technicians and tradesmen.

Rockwell-Collins Retiree Volunteers				
FRISBIE THROWER NO. 2				
DESIGNER	DATE	SIZE	DWGNO	REV
		D	00039	
		SCALE 1/2		SHEET 2 OF 5

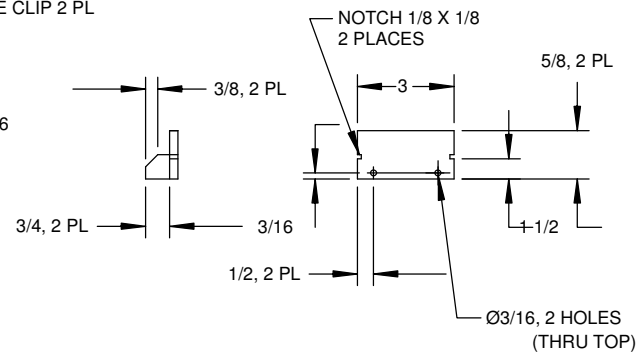
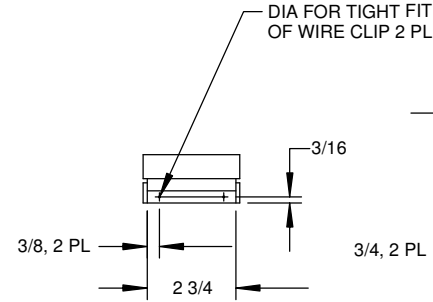
8 7 6 5 4 3 2 1

REVISIONS				
ZONE	REV	DESCRIPTION	DATE	APPROVED

D



TRIGGER-ITEM 10

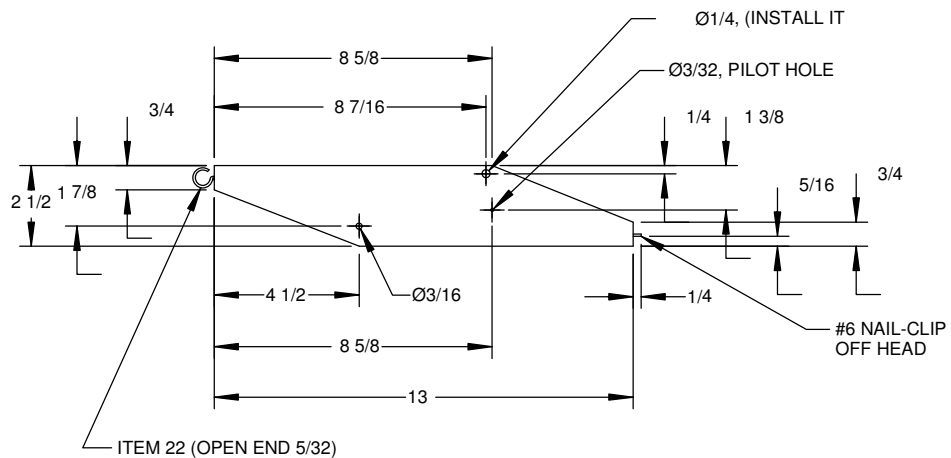


FRICION CLAMP ASSY-ITEM 4
 MATERIAL: TOP & BOTTOM-1/4 PLYWOOD
 BLOCK-PINE
 WIRE CLIP-.040 WIRE (OR LARGE PAPER CLIP)

NOTE: FABRICATE TOP & BOTTOM IDENTICAL.
 GLUE AND NAIL BOTTOM TO BLOCK.
 ASSEMBLE TOP ON LATER ASSY.

C

B



SWING ARM-ITEM 3

This information is circulated as a service to interested persons: no liability is accepted by RCRV in relation to its safety or applicability in individual cases or in relation to its installation or adaption for which appropriate medical, engineering or other professional services ought to be obtained. Permission is hereby given to reproduce this information sheet, drawing or notes. Please give RCRV and the sponsoring organization credit for any information drawings or notes that are disseminated. RCRV is a voluntary organization which provides assistance to disabled people utilizing the capabilities of retired technical volunteers, professional engineers, technicians and tradesmen.

Rockwell-Collins Retiree Volunteers				
FRISBIE THROWER NO. 2				
DESIGNER	DATE	SSL	DWGNO	REV
		D	00039	
		SCALE		SHEET
		1/2		3 OF 5

8 7 6 5 4 3 2 1