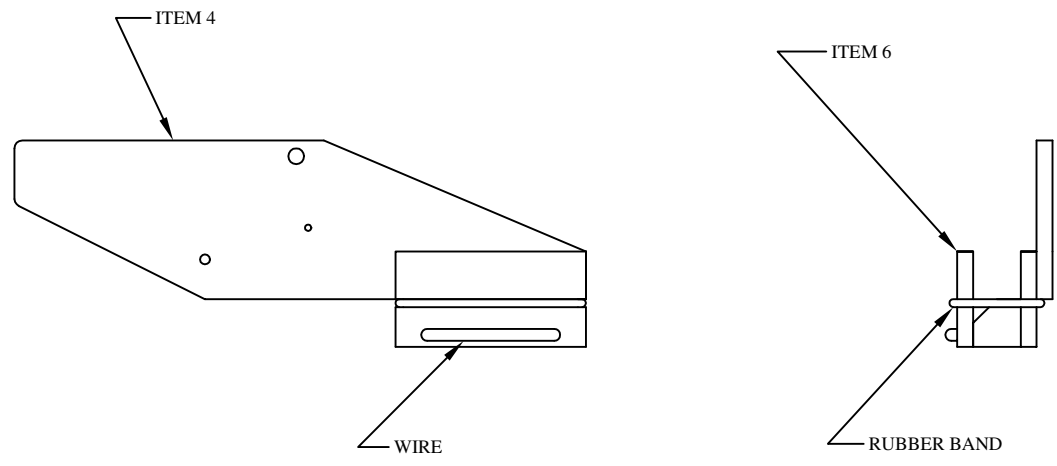




REVISIONS				
ZONE	REV	DESCRIPTION	DATE	APPROVED



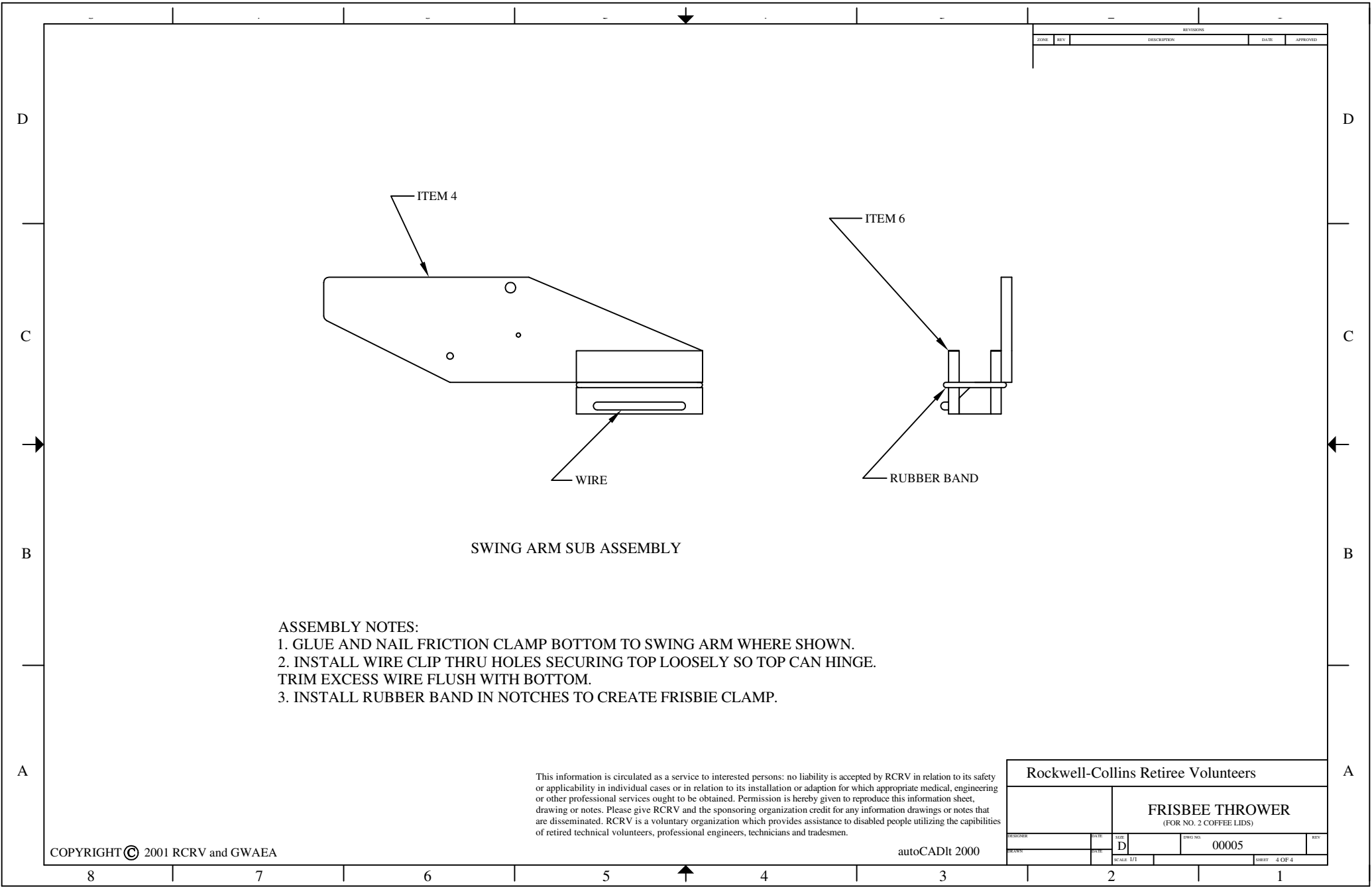
SWING ARM SUB ASSEMBLY

**ASSEMBLY NOTES:**

1. GLUE AND NAIL FRICTION CLAMP BOTTOM TO SWING ARM WHERE SHOWN.
2. INSTALL WIRE CLIP THRU HOLES SECURING TOP LOOSELY SO TOP CAN HINGE. TRIM EXCESS WIRE FLUSH WITH BOTTOM.
3. INSTALL RUBBER BAND IN NOTCHES TO CREATE FRISBIE CLAMP.

This information is circulated as a service to interested persons: no liability is accepted by RCRV in relation to its safety or applicability in individual cases or in relation to its installation or adaption for which appropriate medical, engineering or other professional services ought to be obtained. Permission is hereby given to reproduce this information sheet, drawing or notes. Please give RCRV and the sponsoring organization credit for any information drawings or notes that are disseminated. RCRV is a voluntary organization which provides assistance to disabled people utilizing the capabilities of retired technical volunteers, professional engineers, technicians and tradesmen.

Rockwell-Collins Retiree Volunteers				
<b>FRISBEE THROWER</b> (FOR NO. 2 COFFEE LIDS)				
DESIGNER	DATE	SIZE	DWG. NO.	REV.
		D	00005	
DRAWN	CHECK	SCALE 1/1	SHEET 4 OF 4	

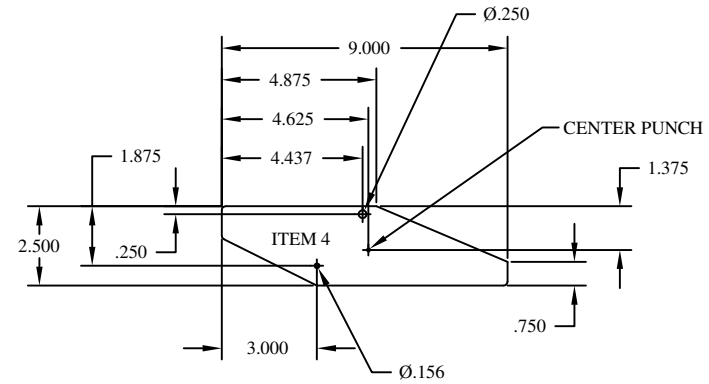
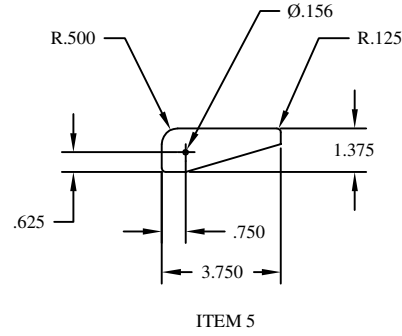
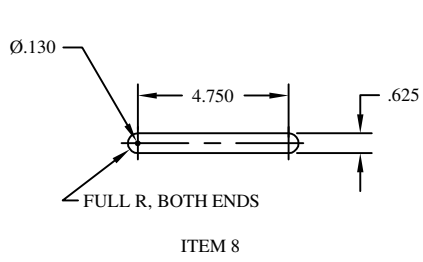


This information is circulated as a service to interested persons: no liability is accepted by RCRV in relation to its safety or applicability in individual cases or in relation to its installation or adaption for which appropriate medical, engineering or other professional services ought to be obtained. Permission is hereby given to reproduce this information sheet, drawing or notes. Please give RCRV and the sponsoring organization credit for any information drawings or notes that are disseminated. RCRV is a voluntary organization which provides assistance to disabled people utilizing the capabilities of retired technical volunteers, professional engineers, technicians and tradesmen.

REVISIONS				
NO.	REV.	DESCRIPTION	DATE	APPROVED

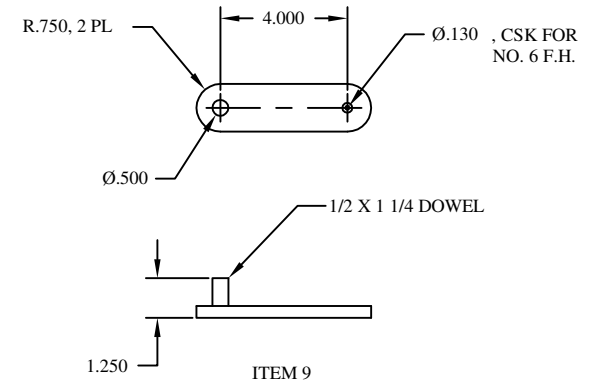
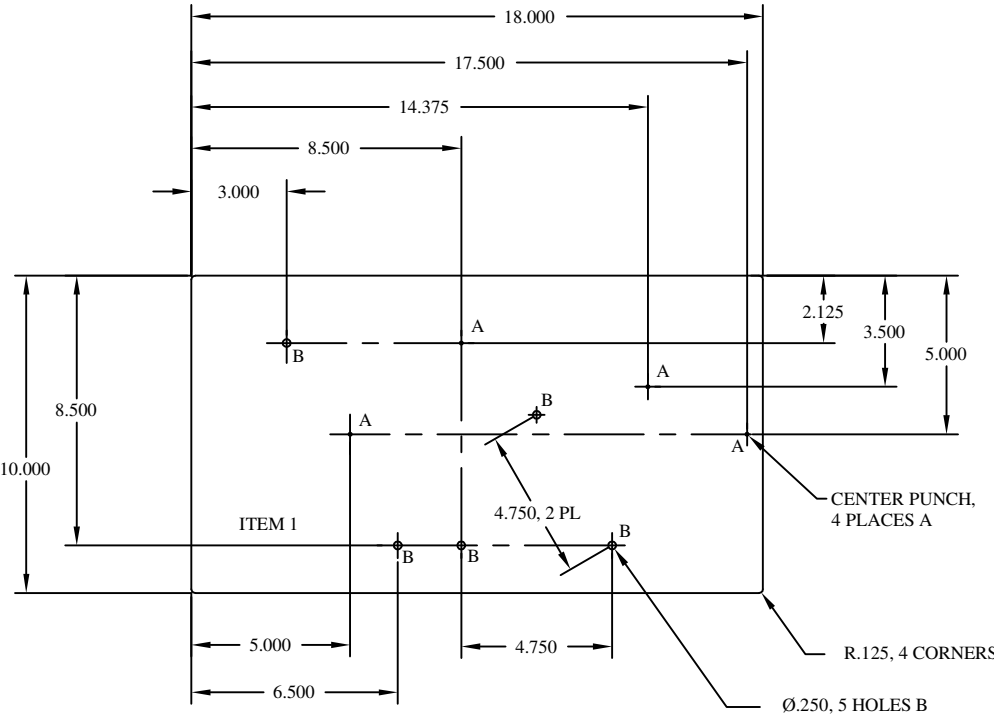
D

D



C

C



B

B

A

A

COPYRIGHT © 2001 RCRV and GWAEA

<b>Rockwell-Collins Retiree Volunteers</b>			
<b>FRISBEE THROWER</b> (FOR NO. 2 COFFEE LIDS)			
DATE	SCALE	REV	BY
		D	
		00005	

autoCADIt 2000

8 7 6 5 4 3 2 1

