

D

D

C

C

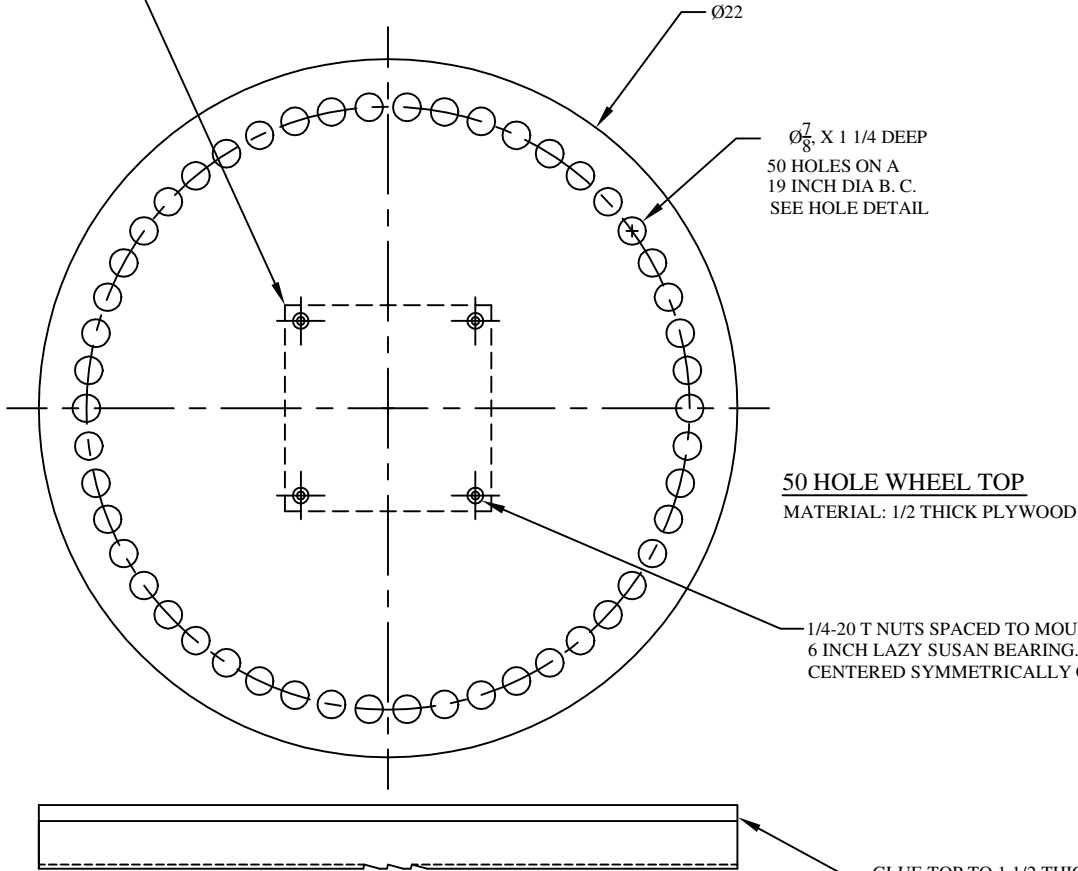
B

B

A

A

6 1/2 X 6 1/2 X 1 MOUNTING BLOCK  
FOR LAZY SUSAN BEARING. PROVIDE 5/16 DIA  
CLEARANCE HOLES FOR MTG BOLTS.  
GLUE AND SCREW TO REAR OF WHEEL.



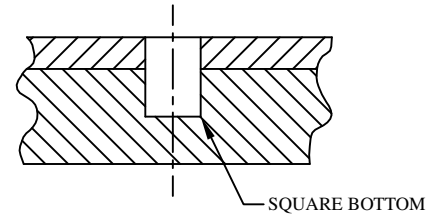
Ø22

Ø7/8 X 1 1/4 DEEP  
50 HOLES ON A  
19 INCH DIA B. C.  
SEE HOLE DETAIL

**50 HOLE WHEEL TOP**  
MATERIAL: 1/2 THICK PLYWOOD

1/4-20 T NUTS SPACED TO MOUNT  
6 INCH LAZY SUSAN BEARING.  
CENTERED SYMMETRICALLY ON WHEEL.

GLUE TOP TO 1 1/2 THICK NOTCH WHEEL  
BEFORE DRILLING 7/8 DIA HOLES.



**HOLE DETAIL**  
SCALE 2/1  
ALL HOLES SQUARE BOTTOM  
AS SHOWN

This information is circulated as a service to interested persons: no liability is accepted by RCRV in relation to its safety or applicability in individual cases or in relation to its installation or adaption for which appropriate medical, engineering or other professional services ought to be obtained. Permission is hereby given to reproduce this information sheet, drawing or notes. Please give RCRV and the sponsoring organization credit for any information drawings or notes that are disseminated. RCRV is a voluntary organization which provides assistance to disabled people utilizing the capabilities of retired technical volunteers, professional engineers, technicians and tradesmen.

REV		DESCRIPTION	DATE	APPROVED

**Rockwell-Collins Retiree Volunteers**

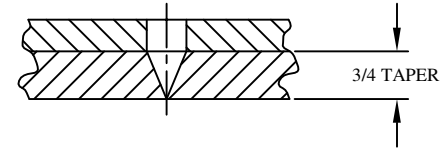
**TURNTABLE**

DESIGNED	DATE	REV	PROJ. NO.	REV
		D	00022	
DRAWN	DATE	SCALE	SHEET 1 OF 1	
		1/2		

6 1/2 X 6 1/2 X 1/2 MOUNTING BLOCK  
FOR LAZY SUSAN BEARING. PROVIDE 5/16 DIA  
CLEARANCE HOLES FOR MTG BOLTS.  
GLUE AND SCREW TO REAR OF WHEEL.

Ø22

Ø5/8 X 1 1/4 DEEP  
75 HOLES ON A  
20 INCH DIA B. C.



HOLE DETAIL  
SCALE 2/1  
TAPER ALL HOLES  
AS SHOWN

75 HOLE WHEEL TOP  
MATERIAL: 1/2 THICK PLYWOOD

1/4-20 T NUTS SPACED TO MOUNT  
6 INCH LAZY SUSAN BEARING.  
CENTERED SYMMETRICALLY ON WHEEL.

GLUE TOP TO 3/4 THICK NOTCH WHEEL  
BEFORE DRILLING 5/8 DIA HOLES.

This information is circulated as a service to interested persons: no liability is accepted by RCRV in relation to its safety or applicability in individual cases or in relation to its installation or adaption for which appropriate medical, engineering or other professional services ought to be obtained. Permission is hereby given to reproduce this information sheet, drawing or notes. Please give RCRV and the sponsoring organization credit for any information drawings or notes that are disseminated. RCRV is a voluntary organization which provides assistance to disabled people utilizing the capabilities of retired technical volunteers, professional engineers, technicians and tradesmen.

REV		DESCRIPTION		DATE		APPROVED	

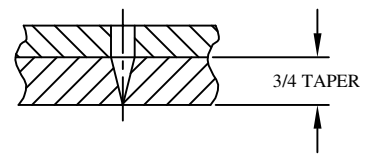
<b>Rockwell-Collins Retiree Volunteers</b>							
TURNTABLE							
DESIGNED	DATE	REV	PROJ. NO.				
		D	00022				
DRAWN	SCALE						
	1/2						

REV		DESCRIPTION	DATE	APPROVED

6 1/2 X 6 1/2 X 1/2 MOUNTING BLOCK FOR LAZY SUSAN BEARING. PROVIDE 5/16 DIA CLEARANCE HOLES FOR MTG BOLTS. GLUE AND SCREW TO REAR OF WHEEL.

Ø22

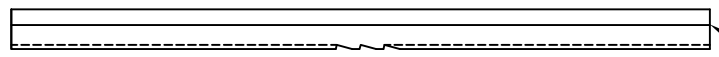
Ø3/8 X 1 1/4 DEEP  
100 HOLES ON A 20 INCH DIA B. C.



HOLE DETAIL  
SCALE 2/1  
TAPER ALL HOLES  
AS SHOWN

100 HOLE WHEEL TOP  
MATERIAL: 1/2 THICK PLYWOOD

1/4-20 T NUTS SPACED TO MOUNT 6 INCH LAZY SUSAN BEARING. CENTERED SYMMETRICALLY ON WHEEL.



GLUE TOP TO 3/4 THICK NOTCH WHEEL BEFORE DRILLING 3/8 DIA HOLES.

This information is circulated as a service to interested persons: no liability is accepted by RCRV in relation to its safety or applicability in individual cases or in relation to its installation or adaption for which appropriate medical, engineering or other professional services ought to be obtained. Permission is hereby given to reproduce this information sheet, drawing or notes. Please give RCRV and the sponsoring organization credit for any information drawings or notes that are disseminated. RCRV is a voluntary organization which provides assistance to disabled people utilizing the capabilities of retired technical volunteers, professional engineers, technicians and tradesmen.

<b>Rockwell-Collins Retiree Volunteers</b>				
TURNTABLE				
DESIGNED	DATE	REV	PROJ. NO.	REV
		D	00022	
DRAWN	SCALE	1/2	SHEET 3 OF 7	

D

D

C

C

B

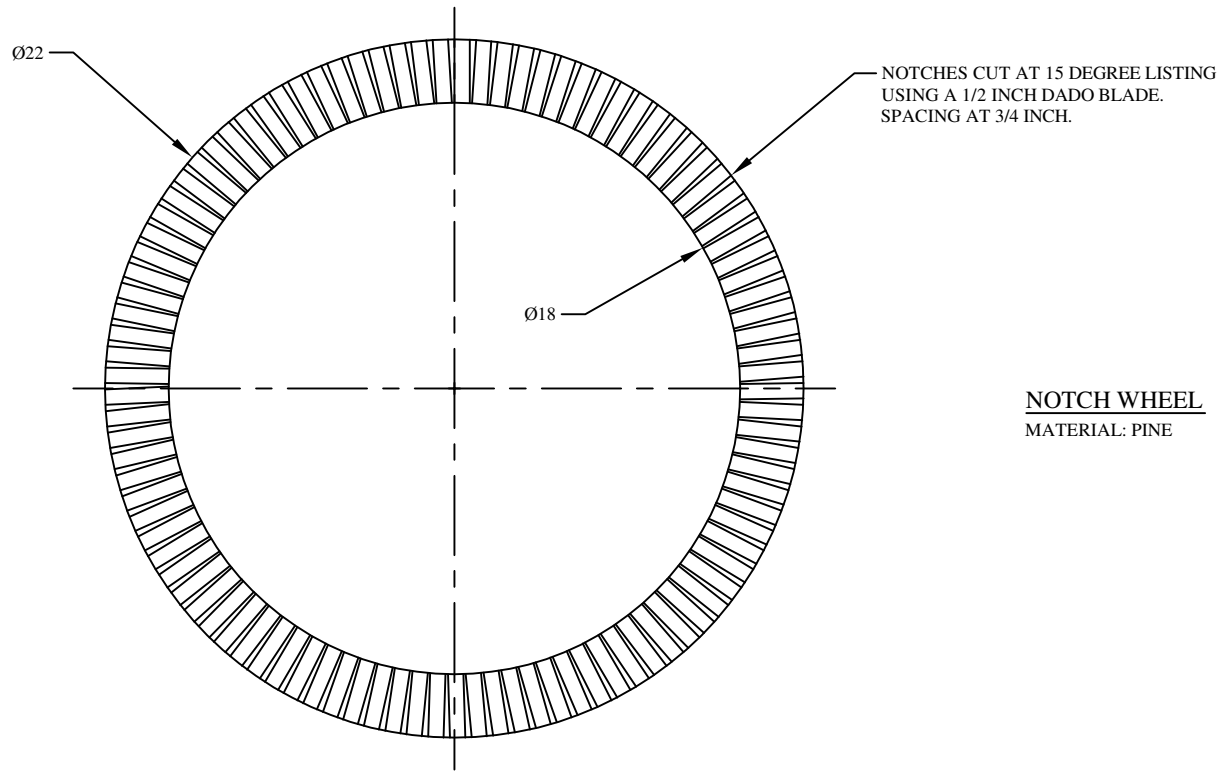
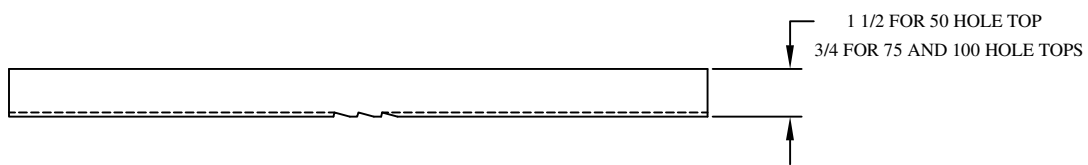
B

A

A

8 | 7 | 6 | 5 | 4 | 3 | 2 | 1

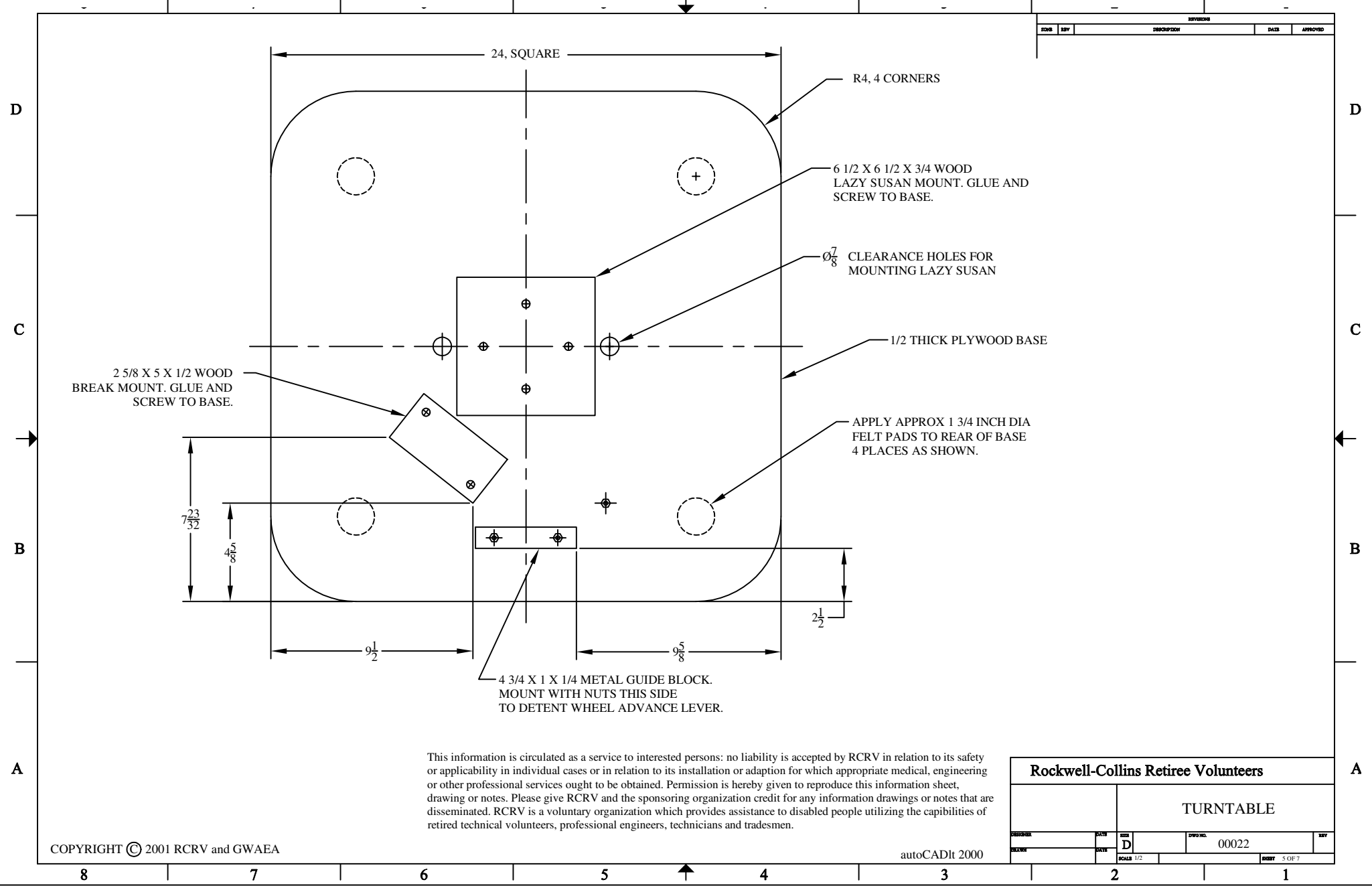
REV		DESCRIPTION	DATE	APPROVED



NOTCH WHEEL  
MATERIAL: PINE

This information is circulated as a service to interested persons: no liability is accepted by RCRV in relation to its safety or applicability in individual cases or in relation to its installation or adaption for which appropriate medical, engineering or other professional services ought to be obtained. Permission is hereby given to reproduce this information sheet, drawing or notes. Please give RCRV and the sponsoring organization credit for any information drawings or notes that are disseminated. RCRV is a voluntary organization which provides assistance to disabled people utilizing the capabilities of retired technical volunteers, professional engineers, technicians and tradesmen.

<b>Rockwell-Collins Retiree Volunteers</b>				
TURNTABLE				
DESIGNED	DATE	REV	PROJ. NO.	REV
		D	00022	
DRAWN	SCALE	SHEET		OF
	1/2	4 OF 7		1



2 5/8 X 5 X 1/2 WOOD  
BREAK MOUNT. GLUE AND  
SCREW TO BASE.

R4, 4 CORNERS

6 1/2 X 6 1/2 X 3/4 WOOD  
LAZY SUSAN MOUNT. GLUE AND  
SCREW TO BASE.

$\varnothing 7/8$  CLEARANCE HOLES FOR  
MOUNTING LAZY SUSAN

1/2 THICK PLYWOOD BASE

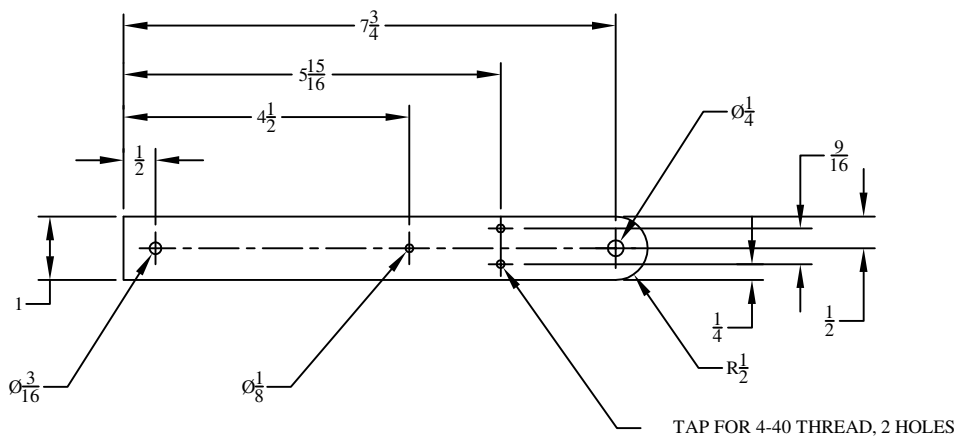
APPLY APPROX 1 3/4 INCH DIA  
FELT PADS TO REAR OF BASE  
4 PLACES AS SHOWN.

4 3/4 X 1 X 1/4 METAL GUIDE BLOCK.  
MOUNT WITH NUTS THIS SIDE  
TO DETENT WHEEL ADVANCE LEVER.

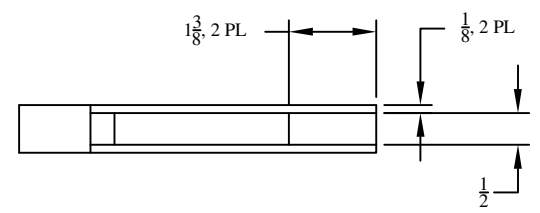
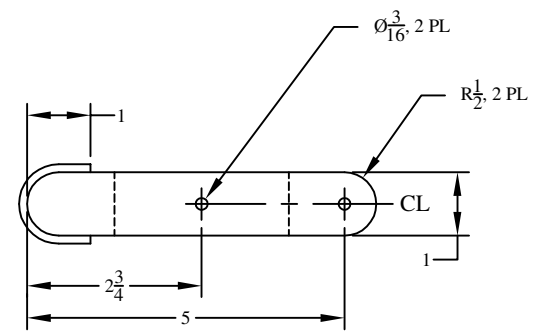
This information is circulated as a service to interested persons: no liability is accepted by RCRV in relation to its safety or applicability in individual cases or in relation to its installation or adaption for which appropriate medical, engineering or other professional services ought to be obtained. Permission is hereby given to reproduce this information sheet, drawing or notes. Please give RCRV and the sponsoring organization credit for any information drawings or notes that are disseminated. RCRV is a voluntary organization which provides assistance to disabled people utilizing the capabilities of retired technical volunteers, professional engineers, technicians and tradesmen.

<b>Rockwell-Collins Retiree Volunteers</b>				
TURNTABLE				
DESIGNED	DATE	REV	PROJ. NO.	REV
		D	00022	
DRAWN	SCALE	1/2	SHEET	5 OF 7

ZONE		REV	DESCRIPTION	DATE	APPROVED



**WHEEL ADVANCE LEVER**  
**MATERIAL: 1/8 THK ALUMINUM**



**BRAKE ASSEMBLY**  
**MATERIAL: PINE**  
**BRAKE PAD: 1/8 THICK**  
**FIRM FOAM RUBBER**

This information is circulated as a service to interested persons; no liability is accepted by RCRV in relation to its safety or applicability in individual cases or in relation to its installation or adaption for which appropriate medical, engineering or other professional services ought to be obtained. Permission is hereby given to reproduce this information sheet, drawing or notes. Please give RCRV and the sponsoring organization credit for any information drawings or notes that are disseminated. RCRV is a voluntary organization which provides assistance to disabled people utilizing the capabilities of retired technical volunteers, professional engineers, technicians and tradesmen.

Rockwell-Collins Retiree Volunteers				
TURNTABLE				
DESIGNED	DRAWN	SCALE	DWG. NO.	REV.
		D	00022	
SCALE 1/1			SHEET 6 OF 7	

NOTES:

1. SPRINGS AS REQUIRED TO PROVIDE RETURN LOAD. MOUNT WITH HARDWARE.
2. 6 INCH LAZY SUSAN TURNTABLE. SECURE TO MOUNTING BLOCK ON BASE WITH WOOD SCREWS.
3. SPACE THE ADVANCE LEVER 1/8 INCH FROM BASE AND SECURE WITH HARDWARE LOOSE ENOUGH TO PERMIT ARM MOVEMENT.
4. TOGGLE BOLT RETAINER. MOUNT WITH 4-40 SCREWS.
5. POSITION BREAK ASSEMBLY AND SPRING LOAD TOGGLE AS SHOWN IN DETAIL AND MOUNT WHEELS WITH 1/4 X 1 CARRIAGE BOLTS. USE CLEARANCE HOLES IN BASE TO ACCESS MOUNTING.

REV		DESCRIPTION	DATE	APPROVED

D

D

C

C

B

B

A

A

SEE NOTE 2

SEE NOTE 3

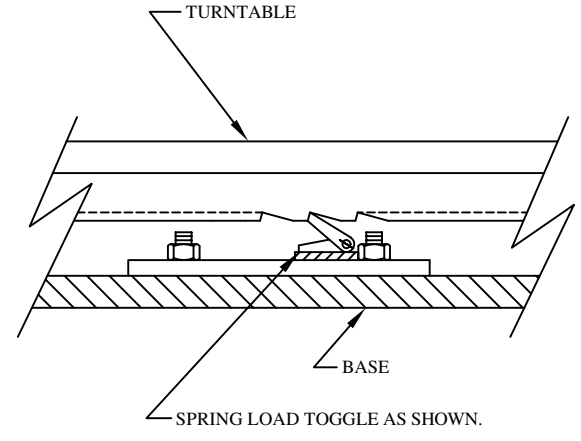
SEE NOTE 1

SEE NOTE 4

SEE NOTE 1

WOOD KNOB

7 5/8



**VIEW AA**

SCALE 2/1  
SEE NOTE 5

This information is circulated as a service to interested persons: no liability is accepted by RCRV in relation to its safety or applicability in individual cases or in relation to its installation or adaption for which appropriate medical, engineering or other professional services ought to be obtained. Permission is hereby given to reproduce this information sheet, drawing or notes. Please give RCRV and the sponsoring organization credit for any information drawings or notes that are disseminated. RCRV is a voluntary organization which provides assistance to disabled people utilizing the capabilities of retired technical volunteers, professional engineers, technicians and tradesmen.

<b>Rockwell-Collins Retiree Volunteers</b>			
TURNTABLE			
DESIGNED	DATE	REV	SYMBOL
		D	00022
DRAWN	DATE	SCALE	SHEET
		1/2	7 OF 7